

MUIRFIELD

Nature's Best Address

WWW.MOVETOBLOOMINGTON.COM

Wooded Lots with Gentle Rolling Landscapes
 Secluded, Estate Sized Lots from 1 to 4+ Acres
 City Water & Sewer, Electric, High Speed
 Internet and Cable Available
 *Lot 1 is approved for septic
 Schools: Arlington, Tri North,
 Bloomington North
 Plats, Covenants and Restrictions Available
 Lots Starting Under \$75,000

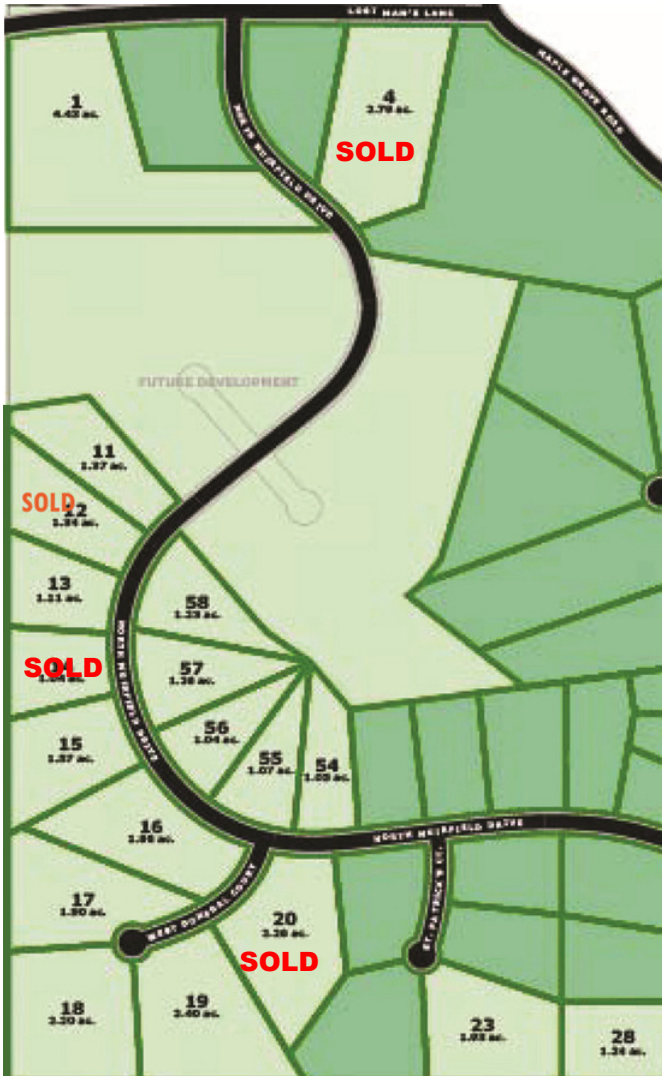


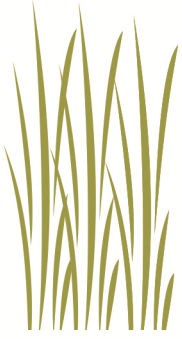
Susan Graves
CRS MGRI, e-Pro

Susan Graves Team
REMAX Realty Professionals

328 S. Walnut Street Suite 6
Bloomington, IN 47401

Direct: 812.334.3563
Cell 812.320.6874
Email: homes@sgraves.com
www.movetobloomington.com





MUIRFIELD

Nature's Best Address

WWW.MOVETOBLOOMINGTON.COM



Susan Graves
CRS MGRI, e-Pro

Susan Graves Team
REMAX Realty Professionals

328 S. Walnut Street Suite 6
Bloomington, IN 47401

Direct: 812.334.3563
Cell 812.320.6874
Email: homes@sgraves.com
www.movetobloomington.com

Available Lots

5023 N. Muirfield Drive 1.37+/- Acres \$74,900
4940 St. Patricks Court 1.93+/- Acres \$74,900
5008 N. Muirfield Drive 1.04+/- Acres \$79,900
5000 N. Muirfield Drive 1.07+/- Acres \$79,900
5015 N. Muirfield Drive 1.04+/- Acres \$84,900
5011 N. Muirfield Drive 1.57+/- Acres \$84,900
2600 N. Donegal Court 1.96+/- Acres \$89,900
5050 N. Muirfield Drive 1.23+/- Acres \$89,900
5014 N. Muirfield Drive 1.26 +/- Acres \$89,900
5131 N. Muirfield Drive 4.43+/- Acres \$89,900
2610 W. Donegal Court 1.9+/- Acres \$94,900
2611 W. Donegal Court 2.2+/- Acres \$104,900
2609 W. Donegal Court 2.4+/- Acres \$109,900

For Your Information,

No residence or other structure shall be constructed until all plans have been submitted to Declarant and have received written approval signed by the President of Acme Development Corporation.

In no event may a structure be nearer than 20 feet to the closest point of the Lot's side lines, 50 feet to the closest point of the Lot's back line, and 30 feet to the closest point of the Lot's front line.

Single Family Residences Size Restrictions:

1 story shall have a ground floor area of not less than 2,000 sq. ft.
1.5 stories shall have a ground floor area of not less than 1,400 sq. ft.
2 stories shall have a ground floor area of not less than 1,200 sq. ft.

Please refer to the recorded covenants and restrictions for further information.